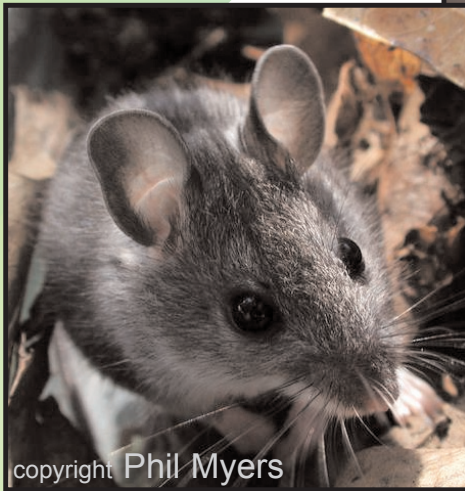


White-footed Mouse



GARDEN EARTH
NATURALIST
ECO-SERVICE CARDS

WHITE-FOOTED MOUSE

Peromyscus leucopus

IDENTIFICATION CLUES



- ◆ body length 3 -4 inches: tail 2 1/2 - 4 inches
- ◆ upper body reddish brown; belly and feet white
- ◆ relatively large ears



Where To Look

The white-footed mouse prefers wooded or brushy areas, abandoned fields and marshes.



Tracks and Other Signs

White-footed mice like to store black cherry pits, one of their favorite foods, under logs.



Winter Adaptations

The white-footed mouse is active year-round, but they will store caches of food near their nests for the winter months.



What It Eat s

White-footed mice eat a wide variety of foods including seeds, nuts, fruits, berries, many kinds of insects, fungi and the roots of plants.



Predators and Other Dangers

Snakes, owls, hawks, skunks, foxes, coyote and house cats are all predators of the white-footed mouse.



Did You Know...

Mice, when threatened or alarmed, will thump their forefeet rapidly.