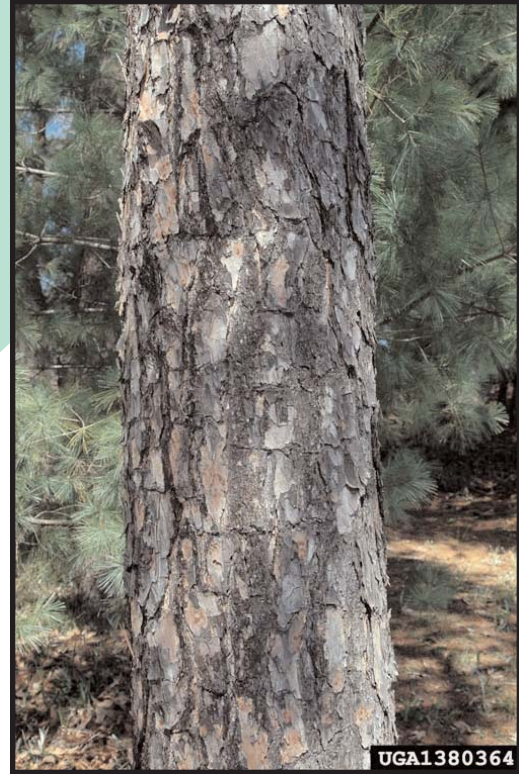
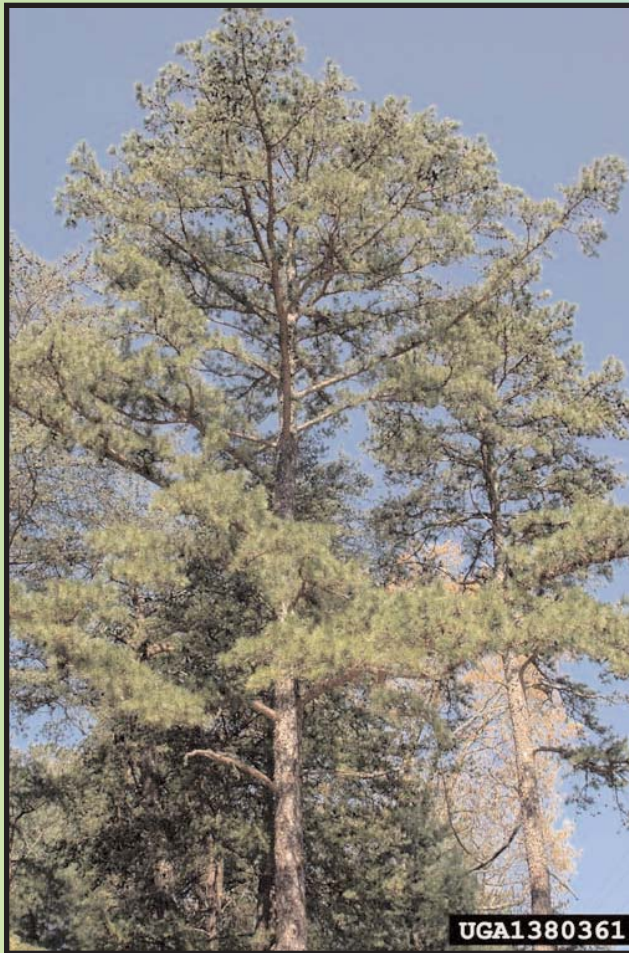


Shortleaf Pine



GARDEN EARTH
NATURALIST
ECO-SERVICE CARDS

SHORTLEAF PINE

Pinus echinata Mill.

FAMILY: Pinaceae

IDENTIFICATION CLUES



SIZE: large tree up to 100 feet tall



LEAF: evergreen needles, 3 - 5 inches long occurring in groups of two or three



FEMALE CONE (covers seeds): oval, 1 1/2 - 2 1/2 inches long; each scale has a point

MALE CONE (produces pollen): yellow-green, 1/4 - 1/2 inches long and in tight clusters at branch tips



BARK: reddish brown, made up of irregular small-scale plates



Where to Look

Shortleaf pine is found in a variety of habitats throughout the state of Georgia and tolerates everything from the heavy clay soils of the piedmont to the sandy soils of the coast.

Importance to Humans

Shortleaf pine is an important lumber and paper pulp tree.

Importance to Wildlife

The seeds are an important food source for birds like grosbeaks and finches. Birds also use the needles for building nests. Being evergreen, pines also provide cover for birds and other animals. Older shortleaf pine with heart rot provide homes for the endangered red-cockaded woodpecker.