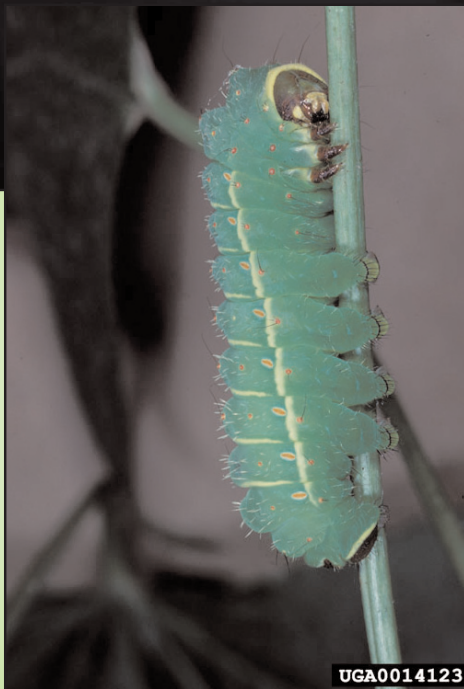


Luna Moth



UGA3225050



UGA0014123

GARDEN EARTH
NATURALIST
ECO-SERVICE CARDS

LUNA MOTH

FAMILY: Saturniidae

ORDER: Lepidoptera

IDENTIFICATION CLUES



- ◆ 3 - 4 1/2 inch wingspan
- ◆ a beautiful soft, pale green with purplish edges
- ◆ hind wings have long tails and large “eyespot”
- ◆ the body is pale and hairy and the antennae are light green and feathered
- ◆ caterpillar is light green with red spots and matures at 2 1/2 inches



Where to Look:

Luna moth's live in deciduous forests , especially where hickory and walnut grow, as these trees are an important food source for the caterpillar.

Who Eats It?

The luna moth is nocturnal (active at night) and is preyed upon by bats and owls.



LIFE CYCLE

COMPLETE METAMORPHOSIS

Luna moths lay their eggs on the leaves of black walnut trees. As soon as the caterpillar hatches it starts eating. It grows to about 2 1/2 inches and then rolls itself in a leaf and wraps the leaf with silk to form a pupa inside which the adult luna moth develops.

What It Eats

The caterpillars feed on the leaves of trees like hickory, walnut, sweetgum and birch. The adult luna moth does not eat and does not even have a mouth.



Did You Know

This beautiful moth is native to North America and is endangered because of pollution, the use of pesticides and the loss of habitat.

Role in the Ecosystem

Luna moths are eaten by owls and bats.