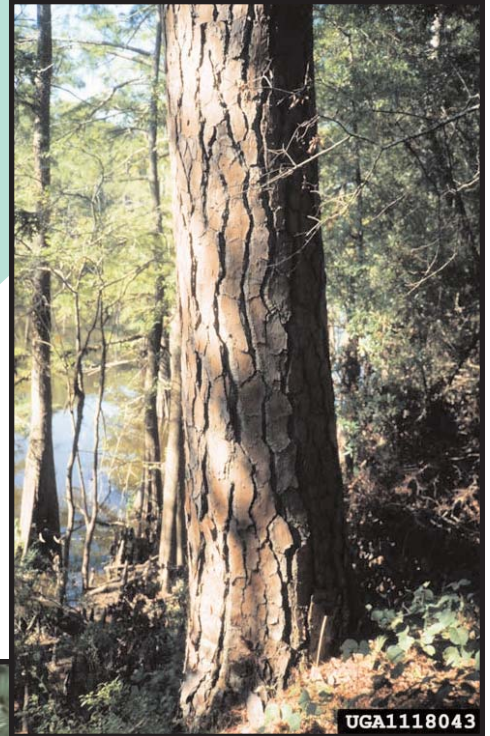


Loblolly Pine



GARDEN EARTH
NATURALIST

ECO-SERVICE CARDS

LOBLOLLY PINE

Pinus taeda L.

FAMILY: Pinaceae

IDENTIFICATION CLUES



SIZE: one of Georgia's largest pines, up to 100 feet



LEAF: evergreen needles, 6 - 9 inches long occurring in groups of three



FEMALE CONE (covers seeds): long (4 - 5 inches) and narrow, oval shape; each scale has a sharp point



MALE CONE (produces pollen): yellow-green, 1 1/2 - 2 inches long and in large clusters at branch tips

BARK: dark reddish brown, made up of flat, rectangular plates



Where to Look

Loblolly pine is found throughout the state of Georgia but is most common in the piedmont. It is tolerant of all types of soil from floodplains to granite outcrops. It is one of the first trees to invade abandoned fields.

Importance to Humans

Loblolly pine is fast-growing and is one of the most valuable pines in Georgia. It is grown for lumber, pulp for paper and plywood.

Importance to Wildlife

The seeds are an important food source for birds like grosbeaks and finches. Birds also use the needles for building nests. Being evergreen, pines also provide cover for birds and other animals.