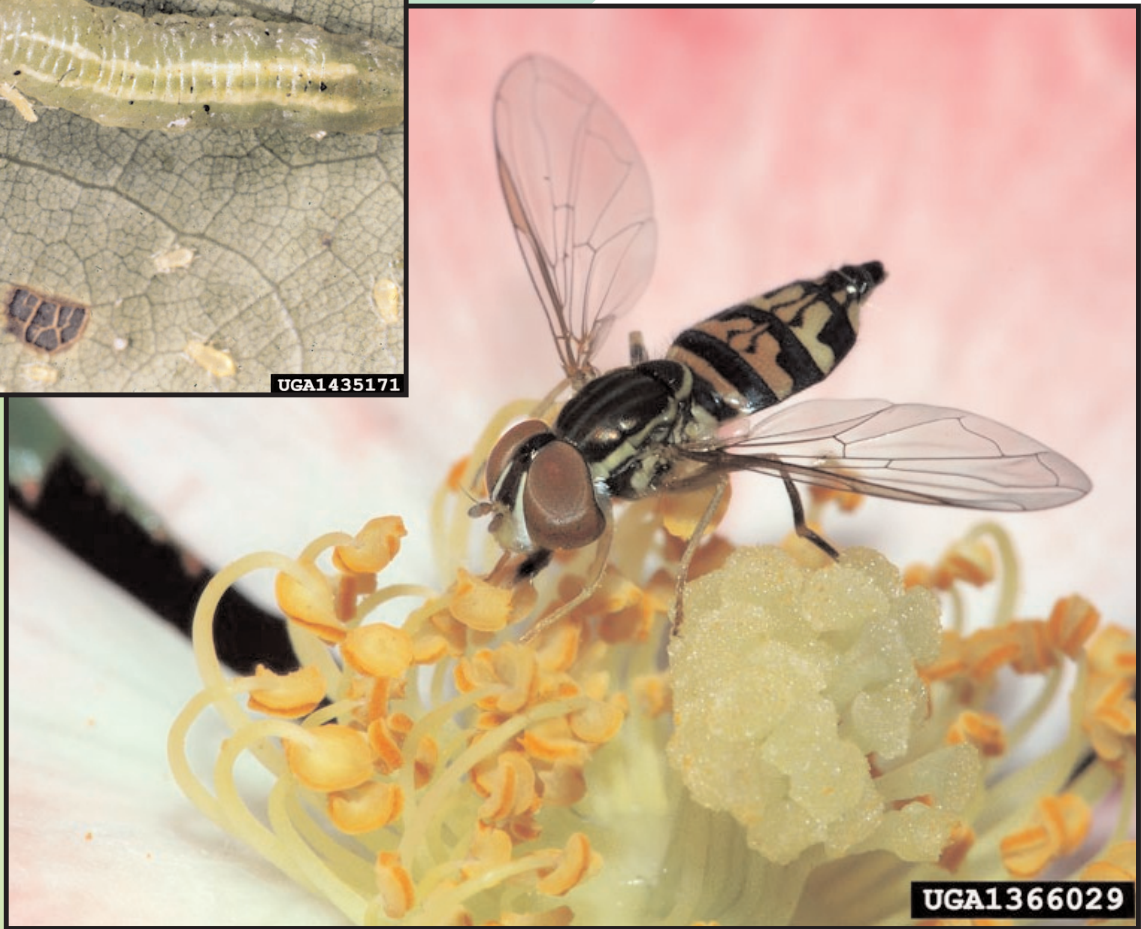


Hover Fly



GARDEN EARTH
NATURALIST

ECO-SERVICE CARDS

HOVER FLY

FAMILY: Syrphidae

ORDER: Diptera

IDENTIFICATION CLUES



- ◆ 1/4 - 3/4 inches
- ◆ Hover flies resemble bees; they are black with a strong yellow pattern on the abdomen or they can be dark and furry, similar to a bumble bee
- ◆ two clear “smokey” wings with a fold that resembles a vein
- ◆ they are often seen hovering above flowers (hence the name)



Where to Look:

Hover flies are found in fields and meadows, gardens, and in clearings of wooded areas.

Who Eats It?

Other flies such as robber flies, birds, frogs and toads enjoy feasting on hover flies.



LIFE CYCLE

COMPLETE METAMORPHOSIS

Hover fly females lay eggs in many different places depending on the species, including aphid colonies, the nests of ants and bees, or in soil or water.

What It Eats

Hover flies feed on the pollen and nectar of many types of flowers. Hover fly larvae feed on other insects, larvae and decaying plant and animal matter.



Did You Know

The American hover fly is beneficial to both commercial and ornamental plants because their larvae like to feed on aphids and the larvae of other damaging insects.

Role in the Ecosystem

Hover flies visit of many wild plant species and also pollinate some crop species, such as apples. They are also important predators of aphids.